

SUNMI V2s PLUS Smart Mobile Terminal

New

Pushing the boundaries to help you achieve more.

Standard Version / Scanner Version / GMS Version

Three printing types supported for increased flexibility.

Support receipt, label and black mark printing* and 80mm printing sizes. Besides, the print speed is upgraded to 80mm/s MAX.

7.7V/3500mAh large capacity removable battery. Duty round the clock, effortlessly.

A fully charged V2s PLUS can last for 14 days in standby mode, or work continuously for over 16 hours. Removable battery design brings longer run time and lasting productivity.

One scanning engine to support all types of barcodes*.

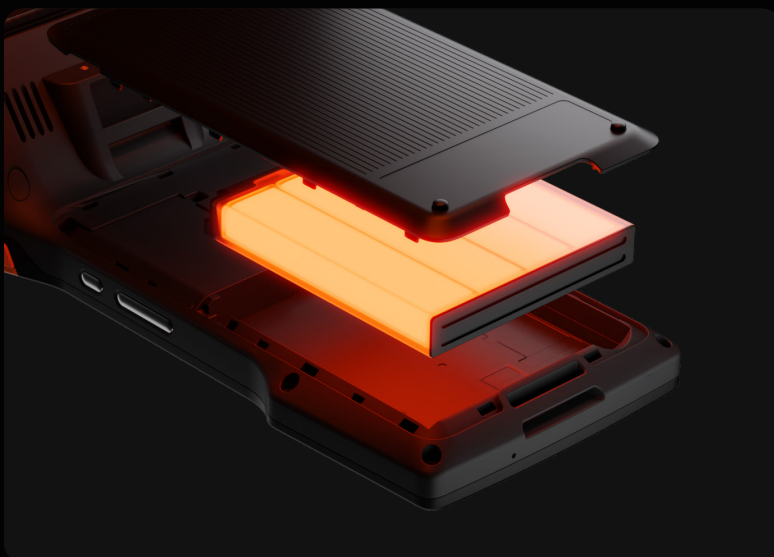
Read any 1D or 2D barcodes, even if scratched, folded or stained.

New configuration for a performance boost.

The leap in performance gives you the ability to smoothly switch between multi-apps and power up your business. Android 11 OS further enhanced device's security and integration with other systems.



* Black mark printing is available in the Scanner Version/GMS Version.
Scanning engine is available with the Scanner Version.





SUNMI V2s PLUS Tech Specs

General Configuration

OS Android 11 Sunmi OS	CPU Cortex-A53 Octa-Core (4*2.0GHz+4*1.5GHz)	Display 6.22"HD+, 1520x720, IPS	Printer High Speed 80 thermal printing, printing speed 80mm/s MAX, support Roll Diameter 50mm Support receipt printing 80mm, label printing(Wide 60mm~80mm; High>20mm; Gap>2mm)	
Speaker 1* 1.2W	SIM 2*Nano SIM	MicroSD Slot 1*MicroSD	Communication 4G/3G/2G	Wi-Fi 2.4G/5G IEEE 802.11 a/b/g/n/ac
Bluetooth Support Bluetooth 2.1/3.0/4.2 Support BLE	GPS GPS/Glonass/Beidou/ Galileo	Interface USB Type-C OTG	Battery Removable, Lithium Polymer battery 7.7V/3500mAh (equal to 3.85V/7000mAh)	Adapter INPUT: AC 100~240V OUTPUT: 5V/2A
Dimensions 237.2*100.91*63mm	Total Weight 535g	Drop Test 1.0m *Data from Sunmi Lab	Environment Operating temperature: 0~45°C storage temperature: -40~70°C	Base (Optional) Multifunctional base

	V2s PLUS Standard	V2s PLUS Scanner & NFC	V2s PLUS GMS
Memory	2GB RAM+16GB ROM	3GB RAM+32GB ROM	3GB RAM+32GB ROM
Scanner	N/A	2D barcode scan engine	N/A
NFC	N/A	Supports Type A&B card, Mifare card Felica card; ISO/IEC 14443 and ISO15693 compliant	Supports Type A&B card, Mifare card Felica card; ISO/IEC 14443 and ISO15693 compliant
PSAM Slot	N/A	4* PSAM	4* PSAM
Camera	Rear:5MP Auto Focus with Flash LED, Support 1D/2D	Rear:13MP Auto Focus with Flash LED, Support 1D/2D Front:2MP FF	Rear:13MP Auto Focus with Flash LED, Support 1D/2D Front:2MP FF
Button	Power On Button Volume Up/Down	Power On Button Volume Up/Down Scanner	Power On Button Volume Up/Down